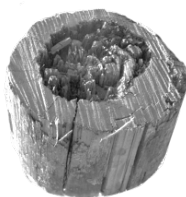


Polux[®] 5

GIVE YOUR POLE A
STRENGTH



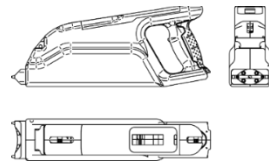
RESIDUAL STRENGTH ESTIMATION
DENSITY PROFILE GRAPHIC
OBJECTIVE TECHNOLOGY
LIGHT WEIGHT DEVICE
WIRELESS DATA TRANSFER
SECURITY DIAGNOSTIC
MAINTENANCE MANAGEMENT
POLE STRUCTURAL DESIGN INDEX



POLUX (R)EVOLUTION

POLUX 5 is the fifth generation of Polux technology.

Based on more than 25 years experience leading its sector, this newer version is a revolution in terms of ergonomics: much smaller & lighter than the previous generations and equipped of an impressive pole's fixing system.



Very easy to use, measurements with an angle are now possible to test below the ground line level area or any other part of the pole.

Non-destructive technology for security and maintenance of in-field wood poles

LIGHTER – FASTER – EASIER

POLUX 5

SIMPLY BETTER



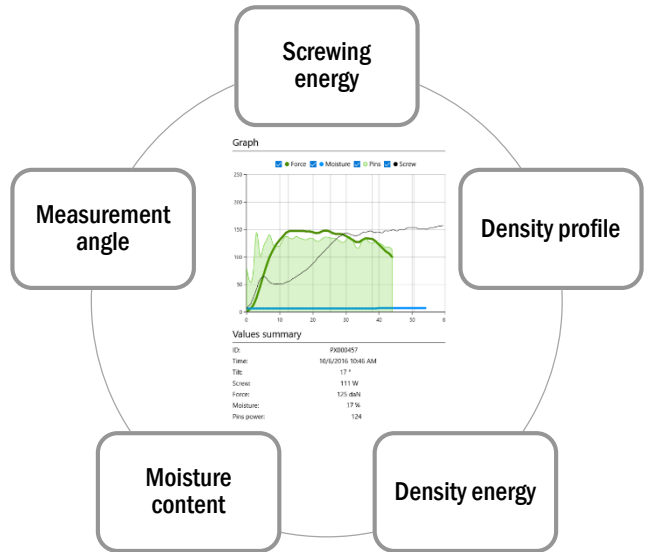
POLUX 5 PROCESS

POLUX 5 is set on the pole thanks to a screw. The energy is recorded during the whole screwing process.

The angle of the device on the pole is stored.

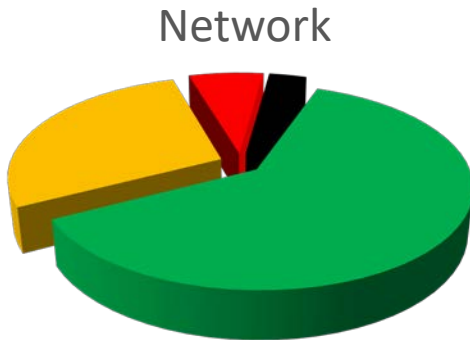
Once the device is strongly set on the pole, the measuring pins are automatically driven within the pole and record both the penetration force and the energy required.

Moisture content is stored when the measuring pins are fully within the wood.



Immediate and objective

RESULTS



- Good
- Acceptable
- Critical
- Danger

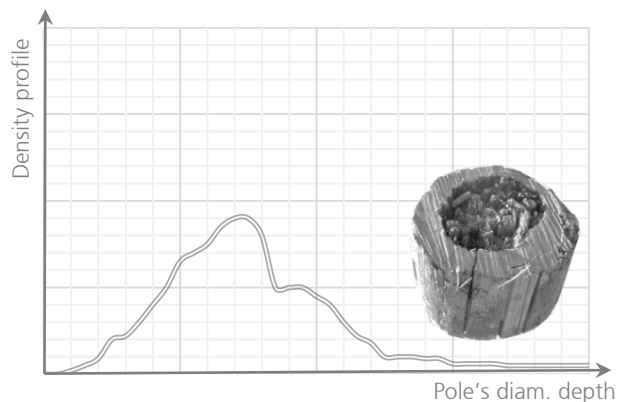
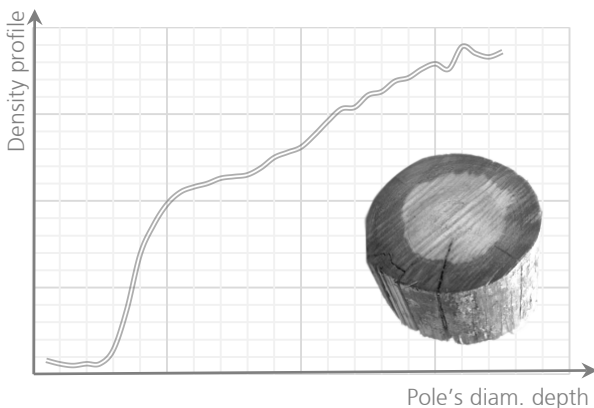
RESIDUAL STRENGTH

SECURITY INDEX

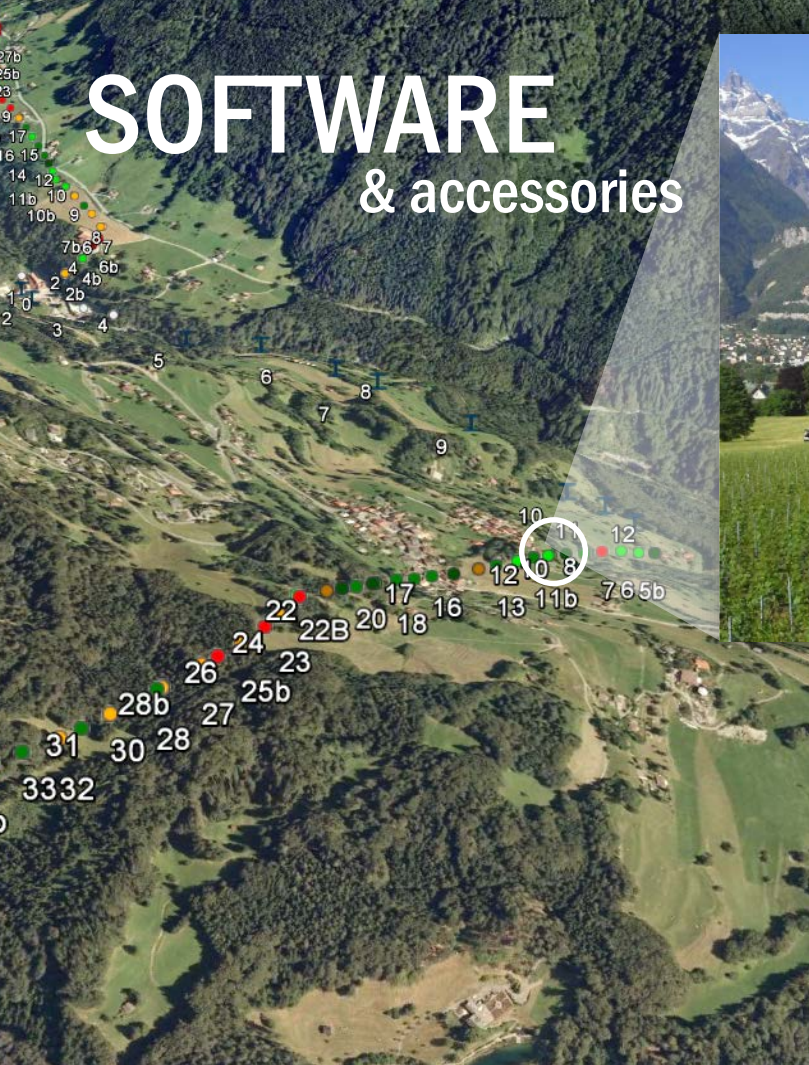
REPLACEMENT EMERGENCY

NEXT INSPECTION DATE

NETWORK ANALYSIS



SOFTWARE & accessories



IN-FIELD DATA COLLECTION



Picus software is entirely designed for Polux and any other data collection including GPS, visual inspection, pictures, Datamatrix etc.

Our engineers ensure the full software compatibility with our customers systems, from the field to the final database.

PERFORMANT BATTERIES



POLUX 5 is using the latest Li-on Bosch Pro batteries.

Very flexible, POLUX 5 can accept all the 18V Bosch Pro batteries, from 1.5Ah to 6.0Ah.

COMFORTABLE BACKPACK



POLUX 5 perfectly fits with very performant and comfortable backpacks available on the market.

Inspectors day-to-day quality is highly improved.

R&D

Polux technology, as a scientific development, takes part to many international projects in order to optimize the diagnostics for each environment.

Destructive tests based on EN14229 or ANSI standards and data collection are the key factors for Polux technology development.



POLUX 5

Contact : polux@polux-technology.com
www.polux-technology.com

POLUX 5 SPECIFICATIONS

Dimensions:	394 x 160 x 82 [mm]
Weight:	2.8 [kg] (4.4lbs)
Battery:	Bosch Pro Li-on 18V
Wireless:	Bluetooth
Inclinometer:	Integrated

